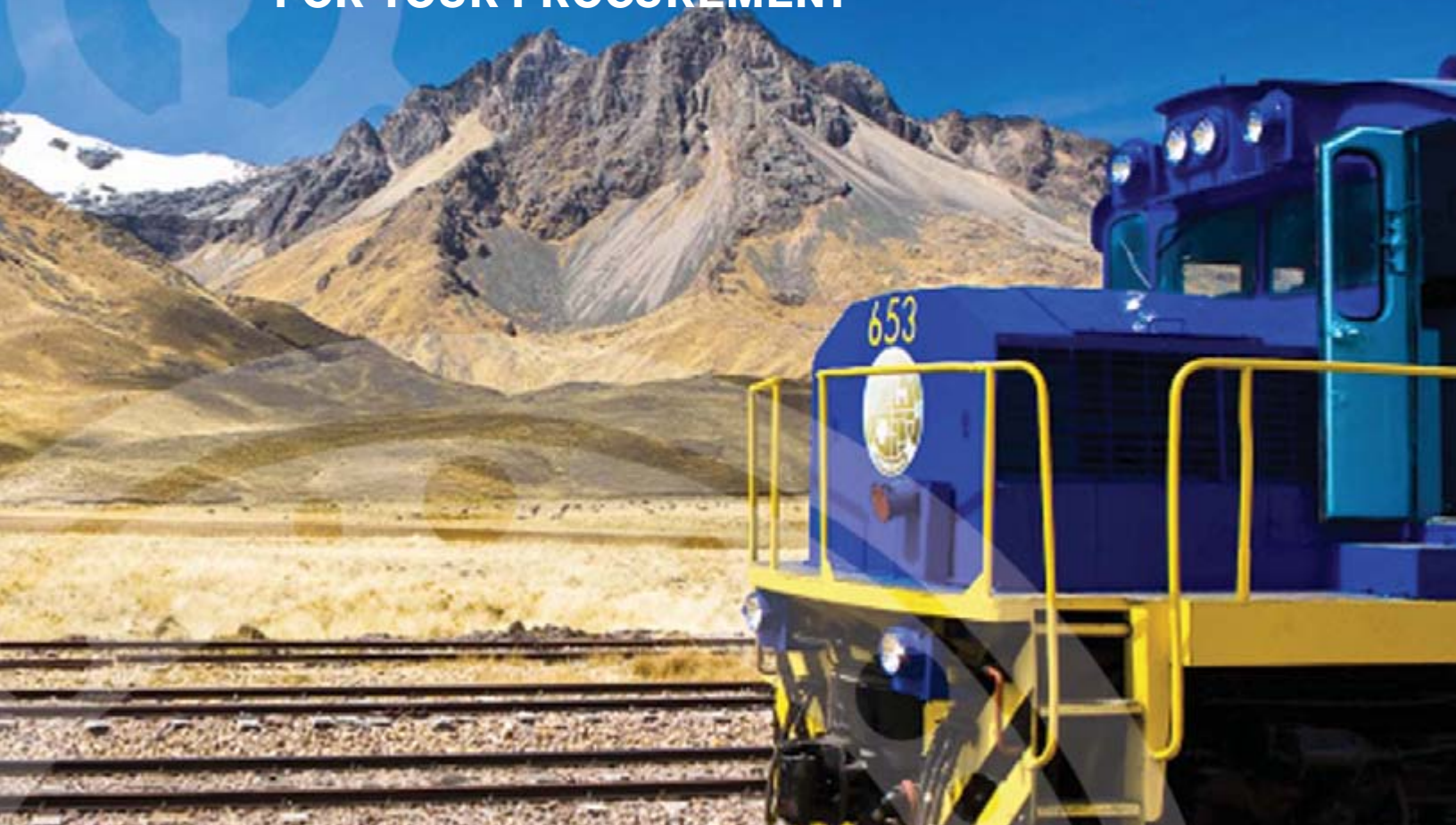


YOUR FIRST CHOICE

FOR YOUR PROCUREMENT



CATALOGUE PARTS



CAPS



OEM Part #	DESCRIPTION
9082206	CAP
9087321	CAP
9323490	CAP
9323491	FILLER CAP
8292303	CAP ASSY
40041494	CAP
41A314413P1	RADIATOR CAP
41A218525P1	RADIATOR CAP

SPARE PARTS

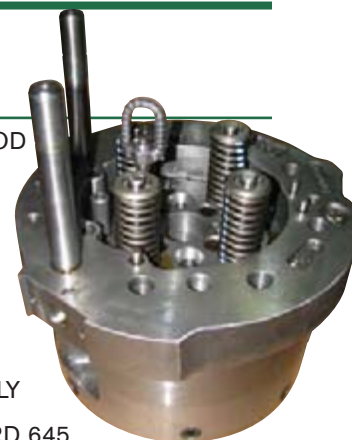
OEM Part #	DESCRIPTION
2240014-2	PUSHING ROD
2221092-1	SLEEVE
4321021	RETAINER
4321022	SPRING RETAINER
4321051	BUSHING
4321041	CAM ROLLER
4321061	CAM ROLLER PIN
2151021	NUT
2171052	BOLT
2501071	STUD
2153174	NUT
2153175	NUT
2151022	NUT
2241342	CAM ROLLERS
4321063	PIN
21514279-3	STUD INJECTION TUBE
2241358	CAM ROLLER PIN
11.5:1	PISTON CROWN
12.5:1	PISTON CROWN
11.75:1	PISTON CROWN
2420021-2	PISTON PIN
24200424	PISTON
24200425	PISTON
24200430	PISTON
2342055	THERMOCOUPLE
2231235	ROTATORS
2251211-2	SEAL
21516311	NUT



2251154-2	WATER PUMP SHAFT
2261369	SHAFT
2231231C	SPRING SEAT
2321604	PIN
2241024-1	YOKE GUIDE
2154025	GASKET
8048880	TEST VALVE
8135971	BUSHING
9319169	NICKEL INSERT
8268641	INSERT
8135970	SPACER
9319503	ROLLER
8146111	PIN
9093027	WATER INLET TUBE
9549578	PEE PIPE
9320122	HOSE ASSEMBLY
9320120	HOSE ASSEMBLY
8491460	HOES ASSEMBLY
8052327	SCREW
40072989	FLEXIBLE WATER TUBE
9571921	BUSHING
8269842	PISTON PIN
9319341	HOSE ASSEMBLY
9320121	HOSE ASSEMBLY
40078951	PISTON PIN
8028460	ROCKER SHAFT
8836855	CONNECTOR BELLOWS

ENGINE PARTS

OEM Part #	DESCRIPTION
8159354	CONNECTING ROD
8305512	CYLINDER LINER 567D
8367800	PISTON CARRIER
8409499	567C PISTON
8415993	LINER
8455551	PISTON ASSEMBLY
8472778	PISTON STANDARD 645
9090233	LINER, CHROMED 645
9318833	CYLINDER LINER
9319735	VALVE



9544257	CONNECTING ROD
9556059	CYLINDER HEAD
9556060	CYLINDER HEAD ASSY
40014531	CYLINDER LINER 710
40060841	CON ROD ASM-FORK
9523619	PISTON
9573312	PISTON
9582436	PISTON
8459702	PISTON

HEAD LIGHT & JUMPERS & RECEPTACLES

OEM Part #	DESCRIPTION
8341246	CLASS LIGHT
8341247	CLASS LIGHT
9522860	CLEAR LENS
10565640	GLASS LIGHT HOLE POT
8183286	HANDLE
10573321	HEAD LIGHT
8370141	HEAD LIGHT
9553653	HEAD LIGHT GPL 47
8332339	HEADLIGHT
332B255G63	JUMPER
8202371	JUMPER
8203267	JUMPER
8226144	JUMPER
8228926	JUMPER
8231116	JUMPER
8243064	JUMPER
8277718	JUMPER
8277743	JUMPER
8308351	JUMPER
8308357	JUMPER
8316350	JUMPER
8316639	JUMPER
8331777	JUMPER
8336254	JUMPER
8340434	JUMPER
8348461	JUMPER
8372050	JUMPER
8397560	JUMPER



8435585	JUMPER
8493229	JUMPER
9502237	JUMPER
841104	JUMPER 10 FT 6 IN
8196711	JUMPER 11 FT
9517653	JUMPER 11FT.
9521685	JUMPER 11FT.
9534861	JUMPER 4 FT.
8195546	JUMPER 5 FT
831458	JUMPER 5 FT
8485561	JUMPER 68 1/8"
8208511	JUMPER 7 FT 6 IN
9543267	JUMPER 7 FT. 6 IN.
8195547	JUMPER 8 FT
8195548	JUMPER 9 FT
9521684	JUMPER 9 FT.
8195543	JUMPER HEAD ALUMINUM
8195545	JUMPER HEAD RUBBER
8101548	LENS
8102775	LENS
8198222	LENS
10529034	LENS & BEZEL
8004930	LENS AMBER
8029782	LENS GREEN
8004928	LENS RED
8035872	LENS RED
9557447	LENS RED 3"
8035213	LENS SEMI GREEN
8055567	LENS-SEMI WHITE
9323909	LIGHT BOX
8365324	MARKER LIGHT
8369661	MARKER LIGHT
8399561	MARKER LIGHT
8320404	MARKER LIGHT CLEAR
8320410	MARKER LIGHT RED
8109889	PLUG
8179678	RECEPTACLE
8088472	RECEPTACLE LAMP
8088473	REFLECTORS
8372129	RESISTOR
8329585	ROUNDED / GREEN
8329584	ROUNDED / RED

ADDITIONAL MECHANICAL



OEM Part #	DESCRIPTION
10631432	RECIRCULATING TOILET,STAINLESS STEEL
10623393	PM118-15 TOILET WITH STAINLESS STEEL BOWL-DRAIN VALVE ACCESS IN FRONT
8326104	VENTILATOR
8278828	VENTILATOR, CAB, FLANGED, CURVED
9331382	VISOR ASSY-BLACK PADDED/FRICTION MT.
40021834	VISOR ASSY-SPAN OAK PADDED/FRICT MNT
9550240	VISOR ASSY-BLACK PADDED/BALL MOUNT
9565302	VISOR ASSY-BROWN PADDED/FRICTION MNT
40011015	VISOR ASSY-BLACK PADDED/FRICTION MNT
10574057	VISOR ASSY-BEIGE PADDED/BALL MOUNT
9505867	LOW WATER REBUILD KIT DELTA P ROOTS FOR PM5018
40006305	DUAL DELTA P TYPE FOR TURBO ENGINE
8428395	P TYPE FOR TURBO ENGINE
8464578	P TYPE ROOTS - BLOWN ENGINE
8861307ACP9	VISOR, ANTI THEFT, BALL, PADDED, BEIGE
8362040	CRANKCASE MONITOR - ELECTRIC CONTROL
40071741	CRANKCASE MONITOR EFI WITHOUT MAP SENSOR
40071740	CRANKCASE MONITOR EFT WITH MAP SENSOR
40084556	KIT, MAINTENANCE, MONITOR, CRANKCASE
40084552	KIT, MAINTENANCE, MONITOR, CRANKCASE
10587276	TIMER DELAY ON DE-ENER 60 SEC DXD DE
40003875	L. P. W'G BEACON W/8' CORD
40003877	L. P. W'G BEACON W/8' CORD
9320130	DELTA P TYPE - TURBO ENGINE
8192134	PKG, WINDSHIELD WING
8164332	WINDSHIELD WING & REAR VIEW MIRROR
8164333	WINDSHIELD WING & REAR VIEW MIRROR
8189725	LH WINDSHIELD WING
8189724	RH WINDSHIELD WING
40022479	MIRROR, ASS'Y, LOCKING, 4.2 X 23.1 LEFT

40022495	MIRROR, ASS'Y, LOCKING, 4.2 X 23.1 RIGHT
8114172	PKG, WINDSHIELD WING
9573201	MIR ASSY, FRICT, LH, 4.6 X 7.8, W/BRKT
9573200	MIR ASSY, FRICT, RH, 4.6 X 7.8, W/BRKT
201-LH	MIRROR ASSY, FRICTION, LH 4.6 X 7.8
RH-9573200	MIRROR ASSY, FRICITON, RH, 4.6 X 7.8
8198817	MIRROR ASSY, FRICTION, 5.1 X 17.7
9092196	WING, WIND, FRICTION, 5.1 X 17.7
6964977	ASSY, AWNING
8123974	AWNING, 55.0 LG SHIELD
10622329	AWNING, FINAL ASSEMBLY
10591404	AWNING, 12.0 X 75.5, 87.6 HGS, COMPOSITE

AIR PRODUCTS



OEM Part #	DESCRIPTION
8254433	BELL RINGER, INCLUDES CLAPPER AND AIR CARTRIDGE
8345708	BELL RINGER
8266148	PISTON ASSY, USED ON BR106 AND BR106-6
8266147	CARTRIDGE ASSY, USED ON BR106 AND BR106-6
8395299	CARTRIDGE ASSY, USED ON BR108
8395302	ASSY, UPPER CARTRIDGE BODY
8332084	SAND TRAP, FLANGE TYPE HORZ DELIVERY
8325191	TRAP, SAND
8348109	TRAP, SAND, in.TEE in. TYPE
8324803	VALVE, CHECK, 2 INCH, VERTICAL DESIGN
8331916	VALVE, CHECK, 2 INCH, HORIZONTAL DESIGN
40038124	VALVE DISC, EQUALIZING, NO ORIFICE
8336407	VALVE DISC, EQUALIZING, .125 INCH HOLE ORIFICE
8336407	VALVE DISC, EQUALIZING, .125 INCH HOLE ORIFICE
9503804	VALVE DISC, EQUALIZING, .312 INCH HOLE ORIFICE

9503804	VALVE DISC, EQUALIZING, .312 INCH HOLE ORIFICE
8330316	VALVE DISC, EQUALIZING, .25 INCH HOLE ORIFACE
8355241	SAND TRAP
8353761	SAND TRAP & SOLENOID ASSY.
8320349	SAND SHUT-OFF
8320347	SAND SHUTOFF
8358277	VALVE, SOLENOID
10587353	VALVE, THERM 74 VDC/110 HEATER CORD
40054769	VALVE, COOLING WATER DRAIN W/O/CONN
40094707	VALVE, DRAIN, WATER, COOLING, W/O CABLE
10619696	VALVE COOLING WATER DRAIN CONN/CABLE
40066424	CHECK VALVE FINAL ASSY

40012337	HEATER, ENGR, DUAL, 3750W, 74VDC, LH DEF
40012339	HEATER, FLUSH, DUAL, 3750W, 74VDC, NO DEF
10606691	HEATER, CAB, WALL MOUNT
10636147	HEATER, FLUSH, STD, 4500W, 74VDC, LH AIR
10664992	HEATER, FLUSH, 4500W, STD, LH AIR, REM
9571209	AIR CONDITIONER, VVVF AC/74 VDC, ROOFTOP
40001548	HEATER, ENGR, STD, 3750W, 74VDC, LH DEF
4002016	HEATER, ENGR, STD, 3000W, 74VDC, TOP DEF
40001549	HEATER, ENGR, STD, 3000W, 74VDC, LH DEF
40002018	HEATER, FLUSH, STD, 3000W, 74VDC,NO DEF
40001550	HEATER, FLUSH, STD, 3750W, 74VDC, NO DEF
40002017	HEATER, FLUSH, STD, 4500W, 74VDC, LH DEF
40001551	HEATER, FLUSH, STD, 3000W, 74VDC, NO DEF

CAB COOLING & HEATING



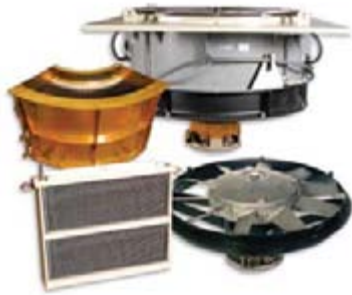
OEM Part #	DESCRIPTION
22109200	HVAC, Subbase (EMD)
41A314692AMP13	HVAC, Dash-9 sidemount
40082621	HVAC, EMD subbase
10649095	HVAC, Cal-tran subbase heater only
40089228	HVAC, Cal-tran subbase
40088646	HVAC, Subbase heater only
41A314692AMP21	HVAC, AC6000 subbase
41A314692AMP22	HVAC, AC6000 quiet subbase
41A314692AMP23	HVAC, AC4400 subbase
9506182	HEATER, STRIP, 660/1320W, 74 VDC, 41 LG
9563022	HEATER, STRIP, 750/1500W, 74 VDC, 41 LG
40012336	HEATER, ENGR, DUAL, 3000W, 74VDC, LH DEF

AUXILIARY GENERATORS



OEM Part #	DESCRIPTION
3195473	DC Aux Gen, 24 kW 74 V 920/2733 RPM
2802920	AC Aux Gen, 18 kW 55 V w/ fan (775 RPM -2886 RPM)
5512589	DC Aux Gen, 18 kW 80 V 850/2733 RPM
22089886	AC Aux Gen, 18 kW w/out fan
5553414	DC Aux Gen, 10 kW 80 V 850/2733 RPM
2803063	AC Aux Gen, 18 kW special speed range

DYNAMIC BRAKING



OEM Part #	DESCRIPTION
40044648	RESISTOR, RADIAL GRIDS
40066957	RESISTOR, RADIAL GRIDS
40069700	RESISTOR, RADIAL GRIDS
8445768	RESISTOR, BOX GRIDS
8445767	RESISTOR, BOX GRIDS
8384617	RESISTOR, SHUNTING
8004587	RESISTOR, SHUNTING
8485235	RESISTOR, SHUNTING
9317914	RESISTOR, SHUNTING
8185705	RESISTOR, BOX GRIDS
8185704	RESISTOR, BOX GRIDS
8304194	RESISTOR, BOX GRIDS
8347464	RESISTOR, BOX GRIDS
8304193	RESISTOR, BOX GRIDS
8185703	RESISTOR, BOX GRIDS
40085141	RESISTOR, BOX GRIDS
40085142	RESISTOR, BOX GRIDS
40085143	RESISTOR, BOX GRIDS
40085144	RESISTOR, BOX GRIDS
40085145	RESISTOR, BOX GRIDS
40085146	RESISTOR, BOX GRIDS
6962778	RESISTOR, BOX GRIDS
8445755	RESISTOR, BOX GRIDS
8212284	RESISTOR, BOX GRIDS
8212285	RESISTOR, BOX GRIDS
8212286	RESISTOR, BOX GRIDS
8212287	RESISTOR, BOX GRIDS
17EA21H134B	RESISTOR, DY H GRIDS
17EA21H109B	RESISTOR, DY H GRIDS
17EA21H43B	RESISTOR, DY H GRIDS
17EA20H131	RESISTOR, DY H GRIDS
17EA22H119	RESISTOR, DY H GRIDS
17EA20H19	RESISTOR, DY H GRIDS
8185705	DYNAMIC BRAKING RESISTOR
8185704	DYNAMIC BRAKING RESISTOR

8304194	DYNAMIC BRAKING RESISTOR
8347464	DYNAMIC BRAKING RESISTOR
8304193	DYNAMIC BRAKING RESISTOR
8185703	DYNAMIC BRAKING RESISTOR

FANS



OEM Part #	DESCRIPTION
9522997	RADATOR FAN, 9 BLADE QUIET 200 V 120 HZ 1 SPEED
40004192	RADIATOR FAN, 12 BLADE 480 V 60 HZ 1 SPEED HEP
9518888	DYNAMIC BRAKE GRID FAN, 10 BLADE, 18 HP, 1250 RPM, 125V
9518890	DYNAMIC BRAKE GRID FAN, 10-BLADE, 36 HP, 1650 RPM, 300V
8310416	RADIATOR FAN, 8 BLADE NONQUIET 200 V 120 HZ 1 SPEED

MOTORS



OEM Part #	DESCRIPTION
5547900	DYNAMIC BRAKE GRID FAN, 16 HP, 150V, 2100 RPM,
2801443	DYNAMIC BRAKE GRID BLOWER MOTOR, 18 HP, 125V, 1250 RPM
2801441	DYNAMIC BRAKE GRID BLOWER MOTOR, 36HP 300V 1650 RPM
2803226	INERTIAL FILTER BLOWER MOTOR, 10 HP
2802865	
2803409	DYNAMIC BRAKE GRID BLOWER MOTOR, 36 HP, GP 60
2803364	DYNAMIC BRAKE GRID BLOWER MOTOR, 100 HP

5540387	DC FUEL PUMP MOTOR .25 HP, 74 VDC, 1200 RPM
4947308	DC FUEL PUMP MOTOR, .75 HP, 74 VDC, 1200 RPM
22109359	AC FUEL PUMP MOTOR W/ ELECTRONICS, .75 HP 74 V 1200 RPM
22070290	INERTIAL FILTER BLOWER MOTOR, 7,5HP
2804094	INERTIAL FILTER BLOWER MOTOR, 7,5HP
22109571	
10629060	AC FUEL PUMP MOTOR W/ ELECTRONICS, 1.5 HP 74 V

BLOCK, PIN, SHAFT



OEM Part #	DESCRIPTION
14X1059	SHAFT
114X1073	BUSHING
114X1103-1	MAIN BEARING
114X1105-4	FLEX COUPLING
114X1106-2	BEARING
114X1111-4	THRUST BEARING
114X1150	MAIN BEARING
115X1046	DOWEL PIN
115X1155	NOZZLE GASKET
115X1832	CLAMPS
115X1876-1	BUSHING
115X1944	GASKET
115X1948	GASKET
115X1989-2	NUT
115X2165	BOLT
115X2166	NUT
115X2167	NUT
115X2168	BOLT
115X2170	STUD
115X2337	WASHER
115X2379	BUSHING
115X2393	SELF-LOCKING NUT

116X1047	THRUST BEARING
116X1069	COVER
116X1070	BEARING
116X1085-2	DRIVE STUB SHAFT
116X1086	THRUST RING
117X1012-4	ARTICULATED ROD
117X1013-1	DOWEL
117X1028-1	BUSHING
117X1029-4	PIN
117X1041-1	SPACER
117X1045-2	BEARING
117X1050-1	BEARING
119X1058	KEY
119X1062-1	CLAMPING RING
119X1079-1	GEAR HUB
121X1001	GROMET RETAINER
121X1038-1	COVER
121X1039-1	LOCK PLATE
121X1077	BOLT
121X1080	GASKET
121X1109	FUEL NOZZLE STUD
121X1115	RING
121X1120-1	BUSH
121X1122-1	CLAMPING RING
121X1126-3	VALVE GUIDE
121X1126-5	VALVE GUIDE
121X1144-2	CYL LINER GASKET
121X1156-3	COVER
121X1157-1	GASKET
121X1163	ADAPTER
121X1167-1	SEAL RETAINING RING
121X1169	PLUG
121X1182-1	LINER
121X1186-1	BOLT
121X1190-1	CYLINDER HEAD
121X1215-2	CYLINDER HEAD
121X1240	EB-LINER
123X1001	UMBRELLA
123X1039	HALE KEEPER
123X1079-1	SPRING SEAT

BLOCK, PIN, SHAFT continued



OEM Part #	DESCRIPTION		
123X1085	ROTATOR	126X1562-1	OIL SEAL
123X1090	INLET & RELIEF VALVE	126X1563	OIL SEAL
123X1110-1	INJECTOR NOZ	126X1572	SHROUD
124X1006	SPACER	126X1644-1	LOCKING KEY
124X1007	SPACER	126X1646-1	SHELL
124X1010-8	SCREW & TAPPET	128X1006-1	GASKETS
124X1013	PUSH ROD	128X1020-1	MANIFOLD BODY
124X1014	TAPPET ROD	128X1023-1	RING
124X1015-3	UMBRELLA FUEL PUMP	128X1024-1	HEAD
124X1025	NUT	128X1353-4	MAIN SECTION
124X1030-7	PUSH ROD	128X1358	SEAL
124X1031-7	IN & OUT PUSH ROD	128X1417-4	ELBOW
124X1036-2	CROSSHEAD GUIDE	128X1444-6	SECTION
124X1058	CROSSHEAD	128X1576	SLEEVE
124X1059-1	CROSSHEAD GUIDE	128X1594	RING
124X1061	SPRING RETAINER	128X1635	SECTION
124X1063	CAM ROLLER	128X1636	BELLOWS
124X1064	CAM ROLLER PIN	128X1639	CLAMP
124X1065-1	ROCKER SHAFT	128X1648	TRANSITION SECTION
124X1068-2	CROSSHEAD	131X1005-4	COVER
124X1070-1	EXH ROCKER	131X1045-1	INSERT
124X1072	PUSH ROD BRG	131X1051	LUBE OIL FILL COVER
124X1075-2	ROCKER-INL	132X1093-1	BEARING
124X1076	ROLLER	132X1298	PLATE
124X1077	CAM ROLLER PIN	132X1299	PLUG
124X1080-2	ELBOW ROCKER	132X1308	BUSHING
125X1009-4	SEAL PLATE	132X1321	SHAFT
125X1015-8	SHAFT SEAL	132X1322	FULCRUM
125X1024-6	OIL SEAL	132X1493-1	NUT
125X1078-2	SHAFT	132X1498	SPRING
125X1081	SPACER SLEEVE	135X1046-1	GEAR
		135X1048-1	GEAR
		135X1059-2	GEAR
		136X1043	DRIVE SHAFT
		136X2218	BASE
		139X1100	DOWEL
		139X1106	KEY
		139X1107-1	NUT



OEM Part #	DESCRIPTION
139X1113	NUT
139X1156	STUD
139X1157	STUD
139X1255	SHAFT AND GEAR
139X1258	FACE PLATE
139X1261	SPACER
139X1265	SHAFT AND GEAR
139X1270	LUBE OIL PUMP
140X1083	COUPLING
140X1118	DRAIN VALVE
140X1488-3	CONNECTION
140X1494-3	SECT
140X1495-2	SECT
140X1496-2	SECT
140X1504	FILTER
140X1761-3	LINE& FITTINGS
140X1826	FUEL LINE
140X2130	FLANGE
140X2420-1	HOSE
142X1019	BUSHING
142X1034-1	BOLT
142X1035-2	PISTON SKIRT
142X1043-3	PISTON CROWN
142X1050	PISTON
142X1052	PISTON PIN
142X1063	PISTON
142X1064	PISTON CROWN
142X1070	PISTON
142X1073	PISTON CROWN
41A250866P20	BUSHING
41A302541P1	BOLT

41A242497P12	FITTING
41A302307P1	HOSE
41A212761P1	RING
41A216250P1	CUT OUT COCK
41A218525P1	CAP
493A790P1	SHIM
41B500680P1	FLEX CONNECTOR
41B515914P1	MTR MOUNT
41B532597G1	SEAL
41B535723G3	DUST GUARD
41B561446G1	CONNECTOR
41C611400P1	MOUNT
41C619140P1	COUPLING
499A910ABP14	CLAMP
41A212792P1	CONNECTOR
41A238791P1	COLLAR
41A238792P1	BEARING CAP
41A238793P1	SPACER
489A270P30	U-BOLT
514577	VALVE PLUG
514642	PLUG
514644	VALVE GASKET
568941	LOCK NUT
1X6428	WEAR PLATE
41A211251P1	PLOT STUD
41A212446G3	BOLT
41D711651G3	PIN
41A210602P2	KEY
41A211200P4	SELF-LOCKING NUT
41A215036P1	PIN
497A803P16	HOSE ASSY 19 11/16"LONG
41D731488G1	INSPECTION COVER BUTTON
4748663G1	INSPECTION COVER
41A215037P2	BOLT
41A215037P4	BOLT
41A215037P15	PIN
41A215038P1	PIN
41C623457G6	BRAKE LEVER

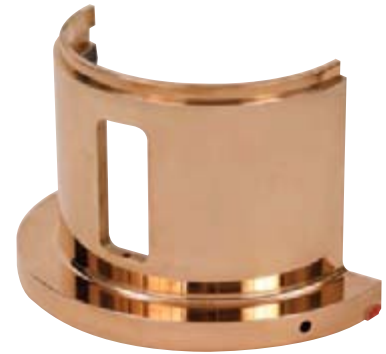
BLOCK, PIN, SHAFT continued



OEM Part #	DESCRIPTION
41D712249G1	PIN
41D712249G9	LEVER
489A419P7	BOLT
495A614P4	PIN
495A614P7	PIN
1X2131	RING
1X2132	SEAL ENCLOSURE
41A211380P2	LOCK PLATE
41C619696G1	SUPPORT
41C619696G2	SUPPORT
476852P4	PIN
8861284P2	PIN
2X3098	SPRING
2X3967	RETAINER
2X3968	RING
2X3969	RETAINER
41A244100AAP13	SNUBBER
968X73	DARER
968X77	DOLT
968X78	NUT
968X81	WEDGE RING
968X85	RETAINER
968X86	SHIM
41A215058G1	PIN ASSEMBLY
41A232821P1	SLEEVE
41B531222G2	CABLE
41B535019P1	CAP
41B535025P1	GEAR
41B537074P2	FLINGER
41B537075P1	GAP
41C633808P3	CAP
41C635780P3	SHAFT
41C635865G1	FRAME HEAD

41C636120G1	INSERT
4713640P1	FLINGER
6744700P2	CAP
41C632663P1	PINION
41C635232G3	GEAR
493A998P1	CAP
494A201P1	SPACER
8804063P1	NUT
8805484P1	GASKET
8805155P1	FLINGER
8805489P1	FLINGER
41C633006P1	BEARING SEAT
41D723217P1	DRIVE SHAFT
41D756403G1	DOOR
41D757626G1	DOOR

MOTOR SUPPORT BEARINGS



OEM Part #	DESCRIPTION
9557789	SUPPORT BEARING 8" STANDARD
9557790	SUPPORT BEARING 8" 1/32" U.S.
9557791	SUPPORT BEARING 8" 1/16" U.S.
9557792	SUPPORT BEARING 8" 3/32" U.S.
9557793	SUPPORT BEARING 8" 1/8" U.S.
9557794	SUPPORT BEARING 8" STANDARD 1/32 O.S. FLANGE
9557795	SUPPORT BEARING 8" STANDARD 1/16 O.S. FLANGE
8300704	SUPPORT BEARING 8" STANDARD
8301189	SUPPORT BEARING 8" 1/32" U.S.
8301190	SUPPORT BEARING 8" 1/16" U.S.
8301191	SUPPORT BEARING 8" 3/32" U.S.



OEM Part #	DESCRIPTION
8301192	SUPPORT BEARING 8" 1/8" U.S.
8301193	SUPPORT BEARING 8" STANDARD 1/32 O.S. FLANGE
8301194	SUPPORT BEARING 8" STANDARD 1/16 O.S. FLANGE
9557797	SUPPORT BEARING 8 1/4" STANDARD
9557798	SUPPORT BEARING 8 1/4" 1/32" U.S.
9557799	SUPPORT BEARING 8 1/4" 1/16" U.S.
9557800	SUPPORT BEARING 8 1/4" 3/32" U.S.
9557801	SUPPORT BEARING 8 1/4" 1/8" U.S.
9557802	SUPPORT BEARING 8 1/4" STANDARD 1/32 O.S. FLANGE
9557803	SUPPORT BEARING 8 1/4" STANDARD 1/16 O.S. FLANGE
8304826	SUPPORT BEARING 8 1/4" STANDARD
8304827	SUPPORT BEARING 8 1/4" 1/32" U.S.
8304828	SUPPORT BEARING 8 1/4" 1/16" U.S.
8304829	SUPPORT BEARING 8 1/4" 3/32" U.S.
8304830	SUPPORT BEARING 8 1/4" 1/8" U.S.
8304831	SUPPORT BEARING 8 1/4" STANDARD 1/32 O.S. FLANGE
8304832	SUPPORT BEARING 8 1/4" STANDARD 1/16 O.S. FLANGE"
8304819	SUPPORT BEARING 8 1/4" STANDARD
8304820	SUPPORT BEARING 8 1/4" 1/32" U.S.
8304821	SUPPORT BEARING 8 1/4" 1/16" U.S.
8304822	SUPPORT BEARING 8 1/4" 3/32" U.S.
8304823	SUPPORT BEARING 8 1/4" 1/8" U.S.
8304824	SUPPORT BEARING 8 1/4" STANDARD 1/32 O.S. FLANGE
8304825	SUPPORT BEARING 8 1/4" STANDARD 1/16 O.S. FLANGE
8304924	SUPPORT BEARING 8" STANDARD
8304925	SUPPORT BEARING 8" 1/32" U.S.
8304926	SUPPORT BEARING 8" 1/16" U.S.
8304931	SUPPORT BEARING 8" STANDARD

8304932	SUPPORT BEARING 8" 1/32" U.S.
8304933	SUPPORT BEARING 8" 1/16" U.S.
8304939	SUPPORT BEARING 8 1/4" STANDARD
8304940	SUPPORT BEARING 8 1/4" 1/32" U.S.
8304941	SUPPORT BEARING 8 1/4" 1/16" U.S.
8304942	SUPPORT BEARING 8 1/4" 3/32" U.S.
8304943	SUPPORT BEARING 8 1/4" 1/16" O.S. FLANGE
8304934	SUPPORT BEARING 8 1/4" STANDARD
8304935	SUPPORT BEARING 8 1/4" 1/32" U.S.
8304936	SUPPORT BEARING 8 1/4" 1/16" U.S.
8304937	SUPPORT BEARING 8 1/4" 3/32" U.S.
8304938	SUPPORT BEARING 8 1/4" 1/8" U.S.
8435108	SUPPORT BEARING 8" STANDARD
8435109	SUPPORT BEARING 8" 1/32" U.S.
8435110	SUPPORT BEARING 8" 1/16" U.S.
8435111	SUPPORT BEARING 8" STANDARD 1/32" O.S. FLANGE
8318577	SUPPORT BEARING 8" STANDARD
8318578	SUPPORT BEARING 8" 1/32" U.S.
8318579	SUPPORT BEARING 8" 1/16" U.S.
8318580	SUPPORT BEARING 8" STANDARD 1/32" O.S. FLANGE
9534909	SUPPORT BEARING 8" STANDARD
9534910	SUPPORT BEARING 8" 1/32" U.S.
9534911	SUPPORT BEARING 8" 1/16" U.S.
9534912	SUPPORT BEARING 8" STANDARD 1/32" O.S. FLANGE
41B535757G6	SUPPORT BEARING 9" STANDARD
41B535757G7	SUPPORT BEARING 9" 1/32" U.S.
41B535757G8	SUPPORT BEARING 9" 1/16" U.S.
41B535757G9	SUPPORT BEARING 9" 1/8" U.S.
41B535757G10	SUPPORT BEARING 9" 3/16" U.S.
41C635563G6	SUPPORT BEARING 9" STANDARD
41C635563G7	SUPPORT BEARING 9" 1/32" U.S.
41C635563G8	SUPPORT BEARING 9" 1/16" U.S.
41C635563G9	SUPPORT BEARING 9" 1/8" U.S.
41C635563G10	SUPPORT BEARING 9" 3/16" U.S.
41C630805G1	SUPPORT BEARING 9" STANDARD
41C630805G2	SUPPORT BEARING 9" 1/32" U.S.
41C630805G3	SUPPORT BEARING 9" 1/16" U.S.
41C630805G4	SUPPORT BEARING 9" 1/8" U.S.
41C630805G5	SUPPORT BEARING 9" 3/16" U.S.

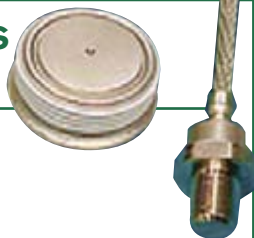
MOTOR SUPPORT BEARINGS continued



OEM Part #	DESCRIPTION
41C630988G1	SUPPORT BEARING 9" STANDARD
41C630988G2	SUPPORT BEARING 9" 1/32" U.S.
41C630988G3	SUPPORT BEARING 9" 1/16" U.S.
41C630988G4	SUPPORT BEARING 9" 1/8" U.S.
41C630988G5	SUPPORT BEARING 9" 3/16" U.S.
41C633366G1	SUPPORT BEARING 8" STANDARD
41C633366G2	SUPPORT BEARING 8" 1/16" U.S.
41C633366G3	SUPPORT BEARING 8" 1/8" U.S.
41C633366G4	SUPPORT BEARING 8" 3/16" U.S.
41B537109G6	SUPPORT BEARING 9" STANDARD
41B537109G7	SUPPORT BEARING 9" 1/32" U.S.
41B537109G8	SUPPORT BEARING 9" 1/16" U.S.
41B537109G9	SUPPORT BEARING 9" 1/8" U.S.
41B537109G10	SUPPORT BEARING 9" 3/16" U.S.
41D532574G6	SUPPORT BEARING 9" STANDARD
41D532574G7	SUPPORT BEARING 9" 1/32" U.S.
41D532574G8	SUPPORT BEARING 9" 1/16" U.S.
41D532574G9	SUPPORT BEARING 9" 1/8" U.S.
41D532574G10	SUPPORT BEARING 9" 3/16" U.S.
41C633819G1	SUPPORT BEARING 7" STANDARD
41C633819G2	SUPPORT BEARING 7" STANDARD W/HOLES
41C633819G3	SUPPORT BEARING 7" 1/16" U.S.
41C633819G4	SUPPORT BEARING 7" 1/8" U.S.
41C633819G5	SUPPORT BEARING 7" 3/16" U.S.
41C637157G4	SUPPORT BEARING 7" STANDARD
41C637157G5	SUPPORT BEARING 7" 1/16" U.S.
41C637157G6	SUPPORT BEARING 7" 1/8" U.S.

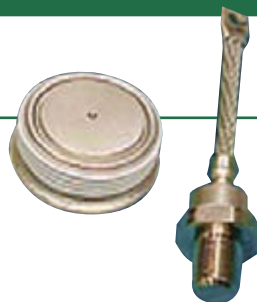
DIODES AND RECTIFIERS

OEM Part #	DESCRIPTION
8368466	DIODE
8368467	DIODE
8452948	DIODE
8452949	DIODE
8452951	DIODE
8452952	DIODE
8481297	DIODE



8515526	DIODE
9515529	DIODE
9515530	DIODE
9515533	DIODE
9515534	DIODE
40029131	DIODE
40029132	DIODE
40032602	DIODE
40032603	DIODE
40053998	DIODE
40076436	DIODE
9515525	SCR
9515527	SCR
9515528	SCR
9515531	SCR
9515537	SCR
9517709	RELAY
9517675	RELAY
9517678	RELAY
9086324	RELAY
9517685	RELAY
9515525	THYRISTOR
9515527	THYRISTOR
9515528	THYRISTOR
9515531	THYRISTOR
9515537	THYRISTOR
9515538	THYRISTOR
40053999	THYRISTOR
9523886	CLAMP
8421017	MODULE
8452948	RECTIFIER
8452949	DIODE
17FM609A1R	"POWER SUPPLY, GATE DRIVE"
17LV66DY46	RELAY
41A281049P11	DIODE
41A281049P8	DIODE
41A281206P1	DIODE
41A281729P1	DIODE
41A296304ALP1	DIODE
41A296304AMP1	DIODE
41A296304ANP1	DIODE
41A296304BBP1	DIODE
41A296304BDP1	DIODE
41A296304BGP1	DIODE

OEM Part #	DESCRIPTION
41A296305BDP1	DIODE
41A296304DV	DIODE
41A296305BAP1	RECTIFIER
41A296305BAP2	RETIFIER
41A296305BBP3	RECTIFIER
41B564808G1	ASSEMBLY
41A272712G1	ASSEMBLY
41A272714G1	ASSEMBLY
41A281725P1	PUCK
41A281726P1	PUCK
41A281729P1	PUCK
41A281730P1	PUCK
41A296076P1	TRANSFORMER
41A296135P4	FUSE
41A296304BDP1	GTO THYRISTOR
41A296305CCP1	GTO THYRISTOR
41A296305CGP1	GTO THYRISTOR
41A296305CEP1	GTO THYRISTOR
41A296305CGP1	GTO THYRISTOR
41A296305CHP1	GTO THYRISTOR
41A296328AEP1	CURRENT MEASURING
41A296328BBP2	SENSOR
41A296335AFP1	CIRCUIT BREAKER
41B555625P1	CIRCUIT BREAKER
41B557167P2	CIRCUIT BREAKER
41B557167P3	CIRUIT BREAKER
41B568021G1	POWER SUPPLY MODULE
41B581141P2	TRANSISTOR
41A296305DAP2	TRANSISTOR
41A259026P1	VARISTOR
41A296304DUP1	DIODE



41C623389P1	DIRECT ACTING SHOCK
84A203222P1	DIRECT ACTING SHOCK
84A203378P1	DIRECT ACTING SHOCK
84A203358P1	DIRECT ACTING SHOCK
2X3967	RETAINER
2X3968	MOUNTING BLOCK
2X3969	RETAINER
41A244100AAP1	FRICITION SNUBBER
41A244100AAP11	FRICITION SNUBBER
41A244100AAP12	FRICITION SNUBBER
41A244100AAP13	FRICITION SNUBBER
41A244100AAP16	FRICITION SNUBBER
41A244100AAP2	FRICITION SNUBBER
41A244100AAP3	FRICITION SNUBBER
41A244100AAP4	FRICITION SNUBBER
41A244100AAP6	FRICITION SNUBBER
41A244100AAP7	FRICITION SNUBBER
41A244100AAP8	FRICITION SNUBBER
41A244100AAP9	FRICITION SNUBBER
968X74	SHOE AND LINING ASSEMBLY
968X75	BOLT
968X78	NUT
968X85	RETAINER
968X88	MOUNTING BLOCK

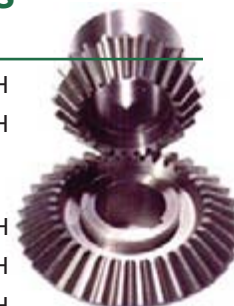
FRICITION SNUBBERS

OEM Part #	DESCRIPTION
4993721	DIRECT ACTING SHOCK
4974695	DIRECT ACTING SHOCK
22012514	DIRECT ACTING SHOCK
40005424	DIRECT ACTING SHOCK
41C624176P1	DIRECT ACTING SHOCK
41C624662P1	DIRECT ACTING SHOCK



BLOC GEARS AND PINIONS

OEM Part #	DESCRIPTION
8109579	GEAR - 62 TOOTH
8178812	GEAR - 65 TOOTH
8179135	PINION GEAR - 14 TOOTH D31
8179295	GEAR - 60 TOOTH
8184341	GEAR - 61 TOOTH
8184342	GEAR - 55 TOOTH
8184378	GEAR - 58 TOOTH
8200600	GEAR - 63 TOOTH D 31
8206504	PINION GEAR - 17 TOOTH D29
8210792	PINION GEAR - 16 TOOTH D31
8428702	PINION GEAR - 13 TOOTH D31
8459295	PINION GEAR - 15 TOOTH D31
8459296	GEAR - 62 TOOTH D31
9332201	PINION GEAR - 19 TOOTH D87
9332203	PINION GEAR - 20 TOOTH D87



BLOC GEARS AND PINIONS continued

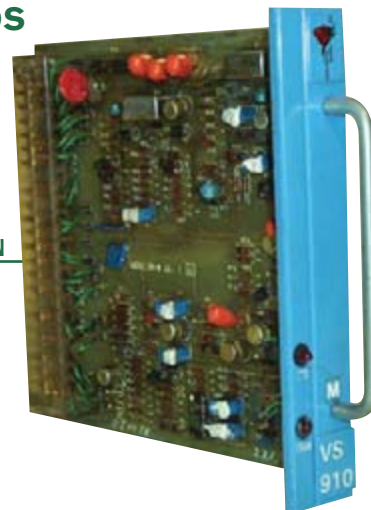


DEM Part #	DESCRIPTION
9332207	GEAR - 69 TOOTH D87
9556208	PINION GEAR - 16 TOOTH D77
9556209	PINION GEAR - 17 TOOTH D77
9556210	PINION GEAR - 18 TOOTH D77
9556211	PINION GEAR - 19 TOOTH D77
9556212	PINION GEAR - 20 TOOTH D77
40006705	PINION GEAR - 15 TOOTH D77
40006706	PINION GEAR - 17 TOOTH D87
40012160	GEAR - 70 TOOTH D87
40049657	GEAR - 57 TOOTH
40051134	GEAR - 64 TOOTH D31
8069019	GEAR 79 T
8069014	GEAR 79 T
8483945	GEAR LOWER IDLER 58T
8483944	GEAR UPPER IDLER 58 T
9543203	GEAR LOWER IDLER 64 T
8360843	GEAR 79 T CK. SHAFT
8360839	GEAR ACC. DRIVE
8458508	PINION 15 T D 29
40049660	GEAR 60 T
40049185	GEAR 62 T
40049658	GEAR 58 T
41C636061P1	DRIVE GEAR 102 T
41C637180P1	PINION 17 T
41C635677P2	PINION 18 T
41C632782P2	PINION 19 T
41C632784P1	GEAR 92 T
41C636682P1	GEAR 93 T
8837727	GEAR 94 T
8837760	GEAR 91 T
41A230113	PINION 20 T
8828169	PINION 21 T
41C632663P1	PINION 43 T
41C632625P1	PINION 43 T
41C637055P6	GEAR 83 T

41C633175 P3	GEAR 72 T
84C620834P2	PINION 20 T
41C632494P1	GEAR - 74 TOOTH GE
41C636447P6	PINION GEAR - 20 TOOTH GE
41C636806P2	GEAR - 83 TOOTH GE
41C636806P2	GEAR - 83 TOOTH GE
41C637399P1	PINION GEAR - 18 TOOTH GE
41C637595P1	PINION 21 T
41C637598P1	GEAR 90 T

MODULES AND CARDS (NEW AND REBUILT)

DEM Part #	DESCRIPTION
17FC114	CARD BN
17FC115	CARD BX
17FC172	CARD
17FC180	CARD AA
17FC181	CARD
17FC182	CARD AT
17FC183	CARD SR
17FC185	CARD
17FC186	CARD
17FC187	CARD
17FC188	CARD
17FC189	CARD
17FC191	CARD
17FC194	CARD
17FC199	CARD
17FC200	CARD
17FC202	CARD
17FC207	CARD SC
17FC210	CARD SS
17FC213	CARD
17FC215	CARD
17FC216	CARD
17FC217	CARD
17FC218	CARD
17FC236	CARD SC
17FC252	CARD
17FC253	CARD



OEM Part #	DESCRIPTION		
17FC253	CARD	17FD409	CARD WL
17FC254	CARD	17FD410	CARD WR
17FC257	CARD	17FD411C4	CARD WD
17FC258	CARD	17FD732A2	CARD TC
17FC274	CARD	17FD733B3	CARD FT
17FC278	CARD	17FD734F4	CARD MD
17FC279	CARD	17FD735B3	CARD MP
17FC300	CARD	17FD736C4	CARD TS
17FC302	CARD	17FD737E1	CARD CP
17FC303	CARD	17FD738A1	CARD FL
17FC304	CARD	17FD739C3	CARD OS
17FC305	CARD	17FD740B2	CARD RG
17FC312	CARD	17FD741E2	CARD RF
17FC313	CARD	17FD753	CARD FT
17FC314	CARD	17FD862	CARD RF
17FC315	CARD PW	17FD863	CARD RF
17FC327	CARD	17FD865D1	CARD RF
17FC328	CARD	17FD867D2	CARD RF
17FC343	CARD	17FD900	CARD RF
17FC347	CARD	17FD902	CARD KI
17FC348	CARD	17FD903	CARD VR
17FC349	CARD	17FD904	CARD RG
17FC356	CARD	17FD905	CARD OS
17FC357	CARD	17FD906	CARD PM
17FC430	CARD	17FD907	CARD DB
17FC448	CARD	17FD908	CARD EX
17FC450	CARD	17FD910	CARD WS
17FC452	CARD	17FD911	CARD RE
17FC460	CARD	17FD913	CARD VR
17FC461	CARD FT	17FD915	CARD RE
17FC462	CARD	17FD916	CARD KW
17FC463	CARD	17FD917	CARD KI
17FC464	CARD	17FD918	CARD VR
17FC475	CARD SS	17FD919	CARD DB
17FC495	CARD	17FD926	CARD DN
17FC496	CARD	17FD927	CARD SU
17FC497	CARD	17FD928	CARD IN
17FC498	CARD	17FD950	CARD AM
17FC527	CARD	17FD951	CARD
17FC528	CARD	17FD952	CARD AM
17FC531	CARD	17FD953	CARD RE
17FD406	CARD WL	17FD968	CARD RE
17FD408	CARD WL	17FD1137	CARD
		17FD1138	CARD

**MODULES AND CARDS
(NEW AND REBUILT)** *continued*

OEM Part #	DESCRIPTION
17FD1139	CARD
17FD1144	CARD
17FD1154	CARD WD
17FD1155	CARD WD
17FD1196	CARD FV
17FD1197	CARD CD
17FD1198	CARD CG
17FD1229	CARD DR
17FD1272A1	CARD WD
17FD1273A1	CARD WD
17FD1285	CARD WS
17FD1286	CARD AD
17FD1289	CARD
17FD1292	CARD SE
17FD1293	CARD TR
17FD1297	CARD MD
17FD1300	CARD
17FD1304	CARD SC
17FD1310	CARD FL
17FD1316B2	CARD RE
17FD1317B1	CARD OC
17FD1320	CARD TS
17FD1321	CARD CP
17FD1322	CARD RG
17FD1328	CARD RF
17FD1331	CARD ST
17FD1343	CARD TR
17FD1376	CARD
17FD1377	CARD
17FD1378	CARD
17FD1379	CARD
17FD1380	CARD
17FD1381	CARD
17FD1384	CARD
17FD1385	CARD
17FD1387	CARD
17FD1389	CARD
17FD1390	CARD
17FD1391	CARD
17FD1392	CARD
17FD1393	CARD OA



17FD1409	CARD
17FD1412	CARD
17FD1426	CARD SL
17FD1427	CARD AD
17FD1428	CARD DD
17FD1429	CARD MP
17FD1443	CARD
17FD1444	CARD TR
17FD1447	CARD PR
17FD1451	CARD RF
17FD1452	CARD RF
17FD1453	CARD RF
17FD1471	CARD
17FD1472	CARD PR
17FD1487	CARD MD
17FD1488	CARD DD
17FD1491	CARD CP
17FD1492	CARD MD
17FD1508	CARD RF
17FD1514	CARD TR
8461868	MODULE AN10
8461869	MODULE AN11
9520384	MODULE AN113
8461870	MODULE AN12
9562620	MODULE AN125
8490341	MODULE AN17
8491485	MODULE AN19
9565707	MODULE BC101
9327053	MODULE CM100
9314528	MODULE DA10
9330949	MODULE DE101
9516052	MODULE DE104
8463768	MODULE DE12
9338033	MODULE DE20
8441851	MODULE DG10
9528258	MODULE DG104
9322062	MODULE DG12
9516002	MODULE DG13
9516047	MODULE DG15
8461871	MODULE DP12
8412925	MODULE DR10
9330955	MODULE DR102
8460734	MODULE DR13

OEM Part #	DESCRIPTION
9338033	MODULE DR20
9329613	MODULE EL100
9516007	MODULE EL101
8460225	MODULE EL11
9092536	MODULE EL12
9517988	MODULE EN102
9548360	MODULE EN103
8498709	MODULE EP11
9322516	MODULE FG100
9330878	MODULE FM100
9551654	MODULE FM104
9092303	MODULE FP10
9517970	MODULE FP21
9330961	MODULE GC103
9541290	MODULE GC104
8442227	MODULE GV1
8437595	MODULE GV11
8453967	MODULE GV12
8442229	MODULE GX2
40069520	MODULE LC121
83-4-301-01	MODULE LCM
9511744	MODULE MS101
9553338	MODULE MS102
8461530	MODULE PF11
8461527	MODULE PF17
8463207	MODULE PF19
8463208	MODULE PF20
8463289	MODULE PF21
9512818	MODULE PS11
83-4-300-01	MODULE PSM
9547254	MODULE RA103
8461049	MODULE RC11
9319866	MODULE RC12
8441478	MODULE SA10
9324007	MODULE SA100
9324007	MODULE SA102
8454147	MODULE SB11
9330882	MODULE SC100
8458900	MODULE SE10
9532050	MODULE SE13
9548351	MODULE SW103
9098617	MODULE TH13
8482633	MODULE TH14

8461873	MODULE TR11
9090718	MODULE TR12
8440256	MODULE VR10
8457997	MODULE VR11
9528276	MODULE VR13
40055335	MODULE VR14
40049812	MODULE VR16
9323337	MODULE WO100
8461874	MODULE WO12
9336710	MODULE WO14
8441080	MODULE WS10

GEAR CASE SEAL KIT



OEM Part #	DESCRIPTION
7898819	THRUST BLOCK
8028006	COLLAR THRUST STD
8028126	VALVE SPRING SEAT
8028419	COLLAR THRUST STD
8065181	HANDLE, LOCOMOTIVE REVERSER, SQUARE
8069139	WASHER, THRUST, CAMSHAFT DRIVE
8069155	BUSHING IDLER GEAR
8069157	BUSHING, CAMSHAFT DRIVE
8081194	COLLAR THRUST O.S.
8081195	COLLAR, BRONZE, 8081195
8081391	BUSHING IDLER GEAR
8088354	PLATE, WEAR, BRAKE RIGGING
8102038	SHIM, PAD, JOURNAL BOX
8104188	PLATE, T/M NOSE SUPPORT
8118892	HANDLE, AUTOMATIC BRAKE VALVE
8135330	WASHER, THRUST, BRONZE
8141702	COLLAR THRUST O.S.
8146108	COLLAR THRUST O.S.
8164050	CLAMP, COMMUTATOR RING
8166495	WASHER, CAMSHAFT GEAR
8176177	ONE-PIECE BOWL LINER - 1/2" RING
8177287	LINER, TWO-PIECE CENTER BOWL
8179545	PAD, BOLSTER SPRING, SD9-SD40
8179559	LINER, TWO-PIECE CENTER BOWL
8204980	HANDLE, LOCOMOTIVE REVERSER, ROUND, BLACK

**GEAR CASE
SEAL KIT** continued



DEM Part #	DESCRIPTION
8204980	HANDLE, LOCOMOTIVE REVERSER, ROUND, RED
8204980	HANDLE, LOCOMOTIVE REVERSER, ROUND, WITH CABLE
8204980	HANDLE, LOCOMOTIVE REVERSER, WITH CABLE AND .312 TAB
8206915	PLATE, WEAR, BRAKE RIGGING
8206916	PLATE, WEAR, BRAKE RIGGING, 1/4" THICK
8206916	PLATE, WEAR, BRAKE RIGGING
8208242	VENT PROTECTOR, CONTROL VALVE
8209941	REPLACED BY 9318435
8251349	HANDLE, INDEPENDENT BRAKE
8255952	PLATE, WEAR, COUPLER CARRIER - 3/8" THICK
8255952	PLATE, WEAR, COUPLER CARRIER - 3/4" THICK
8268641	LOWER LINER INSERT
8274612	LUBRICATOR, EMD JOURNAL BOX
8277771	LUBRICATOR, EMD D47-D87
8282403	CARRIER ASSEMBLY, D47-D87
8315619	WICK ASSEMBLY, EMD D47-D87
8315778	KIT, WICK, EMD D47-D87 WITH HARDWARE
8316460	STRIP, FELT
8321934	LINER, CENTER PLATE, HORIZONTAL
8336782	PLATE, WEAR, COUPLER CARRIER - 3/8" THICK
8336782	PLATE, WEAR, COUPLER CARRIER - 3/4" THICK
8337941	SPRING, SET, 779B-400 LUBRICATOR
8370101	LUBRICATOR, EMD D29CC & CC7
8372214	WICK ASSEMBLY, EMD D29CC & CC7,
957-200	
386454	PLATE, WEAR, BRAKE RIGGING
8392348	BUSHING 8392348
8402969	LINER, ONE-PIECE BOWL - 1/2" RING
8407505	CLAMP, MOTOR SIDE GEARCASE SEAL AND DUST GUARD
8407506	DUST GUARD, COMMUTATOR END

8414444	ELBOW, WATER DISCHARGE
8414444	ELBOW
8431432	LINER, CENTER BOWL, 1/2" BOTTOM
8431433	LINER, CENTER BOWL, 1/2" BOTTOM
8449465	PLATE, WEAR, BOLSTER
8492124	LINER, CENTER BOWL, 1/2" BOTTOM
8495188	HANDLE, INDEPENDENT BRAKE, OFFSET
9085368	LINER, CENTER PLATE, HORIZONTAL
9085369	LINER, CENTER BOWL, 3/8" BOTTOM
9087625	THRUST BLOCK
9088855	LINER, TWO-PIECE CENTER BOWL
9088856	LINER, TWO-PIECE CENTER BOWL (HORIZ. LINER)
9088857	LINER, CENTER BOWL, 1/2" BOTTOM
9318435	LUBRICATOR ASSEMBLY, D29 & D3
9323317	RING, OIL SEAL 8" AXLE
9324108	LINER, PEDESTAL, WITH WASHERS
9324108	LINER, PEDESTAL, SOFT INSERT
9324108	KIT, PEDESTAL LINER, SOFT INSERT WITH 7/8" HARDWARE
9324108	LINER, PEDESTAL, SOFT INSERT WITH 7/8" HALF NUTS
9324108	KIT, PEDESTAL LINER, SOFT INSERT WITH 3/4" HARDWARE
9324109	CAP, OIL FILLER, 1"
9329248	RING, OIL SEAL, 8-5/32" AXLE
9329249	RING, OIL SEAL, 7-29/32" AXLE
9329250	RING, OIL SEAL, 8-1/4" AXLE
9329629	LINER, CENTER BOWL, 1/2" BOTTOM
9329632	LINER, HALF-RING CENTER BOWL
9329633	LINER, ONE-PIECE CENTER BOWL, 1/2" BOTTOM
9330491	LINER, CENTER BOWL, 1/2" BOTTOM
9330492	LINER, TWO-PIECE CENTER BOWL
9330493	LINER, ONE-PIECE CENTER BOWL, 1/2" BOTTOM
9333024	CAP, OIL FILLER, 3/4"
9416524	NUT, PEDESTAL LINER, FULL, 7/8" -9 WITH NYLON INSERT
9442064	BOLT, PEDESTAL LINER, 7/8" -9 X 9 1/2 GRADE 5
9509180	RING CYLINDER HEAD SEAT
9509803	CYLINDER HEAD SEAT RING O.S.
9516094	CYLINDER HEAD SEAT RING O.S.
9524505	SHIM, BEARING FLANGE, 0.062"
9534143	WICK, LUBRICATOR

OEM Part #	DESCRIPTION		
9534943	SEAL, GEARCASE, COMMUTATOR END, MAURITANIA	40020765	PAD, SPRING
9535360	SEAL, GEARCASE, WHEEL SIDE, MAURITANIA	40020765	PAD, SPRING, SD9
9535375	SEAL, GEARCASE, WHEEL SIDE, D-27-D87	40022082	RING, WEAR, HALF CYLINDER
9535376	SEAL, GEARCASE, MOTOR SIDE, EMD D-27-D87	40022083	RING, WEAR, BOTTOM
9544902	PLATE, BOLSTER CHAFING	40025070	LINER, PEDESTAL, WITHOUT HARDWARE
9548794	LINER, CENTER BOWL, 3/8" BOTTOM	40025071	PLATE, WEAR, BOLSTER, 6 HOLE
9550359	HANDLE, AUTOMATIC BRAKE VALVE, SLOTTED	40025071	PLATE, WEAR, BOLSTER
9552602	SEAL, GEARCASE, MOTOR SIDE, D29CC	40026891	KIT, WICK, WITH HARDWARE
9552603	SEAL, GEARCASE, WHEEL SIDE, D29CC	40032042	LINER, PEDESTAL, EXPORT
9557831	WICK, LUBRICATOR, GREEN	40043277	PAD, SPRING, EXPORT
9560005	SEAL, GEARCASE, WHEEL SIDE, D29	40044105	PLATE, WEAR, BOLSTER, HTC60
9560006	SEAL, GEARCASE, MOTOR SIDE, D29	40045549	SEAL, CE LABYRINTH EMD SDL40
9562813	LINER, CENTER BOWL, 1/2" BOTTOM	40051181	KIT, SEAL, EMD OIL GEARCASE
9571073	GASKET, AXLE CAP, EMD D47-D87	40051468	SEAL, GEARCASE, MOTOR SIDE, D43TR
10615926	RUB RAIL	40051469	SEAL, GEARCASE, WHEEL SIDE, D43TR
40006009	PLATE, WEAR, LATERAL THRUST	40052105	SEAL, DUST, U-TUBE D43TR
40006689	SEAL, GEARCASE, MOTOR SIDE, D87BTR-D90	40053181	CLEAT, CABLE ASSEMBLY D77-D87
40007113	VENT PROTECTOR, CAR VENT VALVE, WITH SIDE PLUG	40053182	CLEAT, CABLE, 1 BRACKET, D87, D90TR
40007174	SEAL, PINION, ARMATURE, D27-D87	40054519	SEAL, DUST, SD80
40010820	KIT, PEDESTAL LINER, WITH STANDARD HARDWARE	40055410	DEFLECTOR, BREATHER, EMD SD90 MAC
40010820	KIT, PEDESTAL LINER, WITH MTS FASTENERS	40056864	VENT PROTECTOR, LOCOMOTIVE VENT VALVE
40010820	KIT, PEDESTAL LINER, SOFT STRIP WITH MTS FASTENERS	40058896	CAP ASSEMBLY, VENT, EMD AC GRCASE
40010820	KIT, PEDESTAL LINER, WITH 7/8" HARDWARE	40059296	FILTER, BREATHER, EMD AC GRCASE
40012083	SEAL, DUST, F69RB, AC MOTOR	40059557	SEAL, GEARCASE, MOTOR SIDE D43 AS
40012412	LINER, PEDESTAL, EMD EXPORT	40059558	SEAL, GEARCASE, WHEEL SIDE D43 AS
40012413	LINER, PEDESTAL, WITH WASHERS	40061419	SEAL, SPLITE LINE, OIL GEARCASE
40012758	LINER, ONE-PIECE BOWL - 1/2" RING	40074162	RING, WEAR, EWSRR
40012790	SEAL, PINION, GEARCASE D27-D87	40074825	BUSHING, STRG BM PIVOT
40014335	WICK, EMD D47-D87 DISCONTINUED - USE 779B-301	40074825	SEAL, GRCASE WHEEL SIDE MITSUBISHI MB
40014450	SHIM, BEARING FLANGE, 0.031"	40075098	SPACER, BEARING ADAPTER, SD90MAC
40014545	LUBRICATOR, EMD D47-D87 DISCONTINUED - USE 779B-400	40075177	CYLINDER, HALF, WEAR - EWSRR
40014547	KIT, CONVERSION, 779B TO 1439	40076563	PLATE, WEAR
40017436	CAP, FILLER, GEARCASE	40076615	SPACER, BEARING ADAPTER, SD90MAC
40019893	SHIM, JOURNAL BEARING	40077387	ADAPTER, ROLLER BEARING SD90MAC
		40078020	PLATE, WEAR, AIR DUCT, EMD EWS
		40079236	SEAL, GEARCASE, MOTOR SIDE SD80/90
		40079237	SEAL, GEARCASE, WHEEL SIDE SD80/90
		40081576	SEAL, PINION, SD80/90 MAC
		40082946	SEAL, GEARCASE, MOTOR SIDE, QUEENSLAND
		40082947	SEAL, GEARCASE, WHEEL SIDE, QUEENSLAND

GEAR CASE SEAL KIT continued



DEM Part #	DESCRIPTION
40085733	LINER, PEDESTAL, CLYDE ENGRG
40087273	PAD, SPRING, GT46 MAC
40101372	PAD, SPRING, SD70 MAC
40106383	SEAL, GEARCASE, WHEEL SIDE, EMD SD89
40106384	SEAL, GEARCASE, MOTOR SIDE, EMD SD89"
160X1003	KIT, DUST GUARD, CE, 752 AF
160X1026	KIT, GEARCASE SEAL, 752 E8 COMBO
160X1066-1	KIT, GEARCASE SEAL WITH FASTENERS, 752 AH
160X1066-2	KIT, GEARCASE SEAL WITH FASTENERS
160X1067	KIT, GEARCASE SEAL WITH FASTENERS, 752AF/AG
160X1067-1	KIT, GEARCASE SEAL WITH FASTENERS, 752AF/AG
160X1092-1	KIT, GEARCASE SEAL KIT WITH FASTENERS
334B323G1	CARRIER ASSY GE 761 A1, W/GAS
3X7915	BOLT
3X7915	GE STYLE MTS SELF TORQUING PE
3X7916	NUT
3X7916	GE STYLE MTS SELF TORQUING PE
41A215960P1	CAP, OIL FILLER, 1"
41A216594P1	PLATE, WEAR, TRUCK CENTER BOWL
41A218611P1	GUIDE, RECTANGULAR
41A230387P1	GASKET, AXLE CAP, GE 761 & 76
41A230402P1	GASKET, GE 764
41A230409G3	SUPERSEDED BY 41B538243P1
41A230502P1	GASKET, AXLE CAP, GE 752 E4-E8
41A235215P3	CLAMP, DUST GUARD
41A238534P1	CAP, OIL FILLER, 3/4"
41A238550P1	WICK, LUBRICATOR (NO COLOR)
41A238550P2	WICK, LUBRICATOR, GE 752, YELLOW
41A238550P3	WICK, LUBRICATOR
41A239110P1	GASKET, AXLE CAP, GE 752 AF
41A239250P2	WICK, LUBRICATOR, RED
41A242511P1	BUSHING, RADIATOR SHUTTER

41A244372ABP1	PAD, BEARING
41A244372ADP1	PAD, BEARING, U26C
41A302548P2	BUSHING, RADIATOR SHUTTER
41A302549P1	BUSHING, HALF, RADIATOR SHUTTER
41A314803P2	PAD, SPRING, COIL
41A330086P1	RING, FLINGER, 761 COMMUTATOR END
41B515390P1	LINER, PEDESTAL, ONE-PIECE WITH HOLES IN BASE
41B515390P3	LINER, PEDESTAL, ONE-PIECE WITH WASHERS
41B515390P3	LINER, PEDESTAL, SOFT INSERT
41B515390P3	LINER, PEDESTAL, ONE-PIECE WITH MTS INSERTS
41B515390P3	LINER, PEDESTAL, SOFT INSERT, WITH MTS FASTENERS
41B515390P3	LINER, PEDESTAL, SOFT INSERT
41B515390P3	LINER, PEDESTAL, WITH 3/4" HARDWARE
41B515390P5	LINER, PEDESTAL, SOLID, NO WASHERS
41B530656G1	CARRIER ASSEMBLY, GE 761 - 768
41B530696P1	PLATE, PUSHER, GE 752 E4-8
41B531792G1	SEAL, DUST, FELT INSERT, GE 752
41B535245G1	RING, OIL SEAL, 9" AXLE
41B535245G2	RING, OIL SEAL, 8-7/8" AXLE
41B535882P1	SEAL, DUST, GEARCASE 752 AF
41B535882P2	SEAL, GEARCASE, MOTOR SIDE, 752 AF
41B535883P2	GUTTER, GEARCASE, 752AF-3
41B537189P1	SEAL, DUST, GEARCASE, MOTOR SIDE, 752E8
41B537190P1	GUTTER, GEARCASE, WHEEL SIDE, 752 E8
41B537191P1	GUTTER, GEARCASE, MOTOR SIDE, 752 E8
41B537266P1	GUARD, DUST, COMMUTATOR END, GE 752
41B537307P1	RING, FLINGER, COMMUTATOR END, 752AF
41B537466P1	SEAL, DUST, GEARCASE, WHEEL SIDE 752AF-E8
41B537778P1	GUARD, DUST, COMMUTATOR END GE 761
41B537921G1	FLINGER, SUPPORT BEARING, 7-1/4" GE 761
41B537995P1	SEAL, INSERT, GE 752 AH-AG AR
41B537995P2	SEAL, INSERT, GE 752 AH-AG AR
41B538075P1	CAP, GEARCASE FILLER, GE 761 ANR
41B538243P1	CAP, GEARCASE FILLER, GE 752
41B538435P1	SEAL, INSERT, GE 761-ANR2, 792A
41B538435P3	SEAL, INSERT, GE 792 & 761 WITH TABS
41B538973P1	SEAL, PINION, GE 752-AJ

OEM Part #	DESCRIPTION		
41B538984P2	GUARD, DUST COMMUTATOR END, GE 793"	493A445P1	WICK ASSY. GE 764 (2107)
41B539013P2	SEAL, PINION BORE, GE 793A1	494A549G1	WICK ASSEMBLY, GE 752 E4
41B539018P1	SEAL, INSERT, GE 793A1, TAB	497A739P2	RING, WEAR RING, CENTER BOWL
41C615290P1	OIL PUMP BUSHING	497A743P1	RING, WEAR, 3/8" THICK
41C615290P2	OIL PUMP BUSHING	497A743P5	RING, WEAR, 11 7/8" THICK
41C615291P1	OIL PUMP BUSHING	497A764P2	RING, WEAR,CENTER PLATE
41C615291P2	OIL PUMP BUSHING	497A806P60	CAULKING, SILICONE ADHESIVE
41C629423G1	LINER, CENTER BOWL, "C" TRUCK, 2-PIECE	84A200508P1	PLATE, WEAR, TRUCK, AMTRAK
41C629423P1	LINER, CENTER BOWL, "C" TRUCK, HALF	84A207344P1	PLATE, WEAR, HI-AD TRUCK
41C629424G1	LINER, CENTER PIN, "B" TRUCK, 2-PIECE	84A213491P1	PEDESTAL LINER
41C629424P1	LINER, CENTER PIN, "B" TRUCK, HALF	84B101180P1	PLATE, WEAR, COUPLER CARRIER
41C630516G1	LUBRICATOR ASSEMBLY, GE 761 & 768	84B105520P1	BUSHING, CENTER PIN, GE DASH-9
41C630516G2	KIT, CARRIER GE 761& 768	84B105529P1	PAD, SPRING, GE DASH-9
41C632068G1	LUBRICATOR ASSEMBLY, GE 752 E4-E8	84B512767P1	HANDLE, LOCOMOTIVE REVERSER, ROUND, BLACK
41C632068G2	CARRIER ASSY, GE 752	84C602220P1	SEAL, GEARCASE, MOTOR SIDE, GEB-24A1
41C635696G1	LUBRICATOR ASSEMBLY, GE 752 AF-AG	84C613074P2	LINER, PEDESTAL, GE DASH-9, MTS STYLE
41C635696G3	KIT, WICK GE 752 AF	84C613074P2	LINER, PEDESTAL, GE DASH-9, GE STYLE
41C635696G4	KIT, CARRIER GE 752 AF	84C614426P1	SEAL, GEARCASE, MOTOR SIDE, GE 792-A1
41C635696G5	LUBRICATOR, GE 752 AF MOBIL	84C614427P1	SEAL, GEARCASE, WHEEL SIDE, GE 792-A1
41C636068G1	WICK ASSEMBLY, GE 752 AG	84C616762P2	SHIM, GEB-13-B1, 0.125
41C636096G3	CARRIER ASSY GE 752 AF	84C618230P1	SUPERSEDED BY 84C618357P1
41C636751P1	GUTTER, GEARCASE, TOP, GE 752AF-AG	84C618334P1	SEAL, GEARCASE, WHEEL & MOTOR SIDE, GE 793-A1
41C636752P1	GUTTER, GEARCASE, BOTTOM, GE752AF-AG	84C618338P1	SEAL, GEARCASE, MOTOR SIDE, GE BHP
41C637103P1	SUPERSEDED BY 84C618230P1	84C618339P1	SEAL, GEARCASE, WHEEL SIDE, GE BHP
41C637103P2	SUPERSEDED BY 84C618356P1	84C618356P1	SEAL, GEARCASE, MOTOR SIDE, GE 752 AH
41C637106P1	SEAL, GEARCASE, MOTOR SIDE, GE 752 AF-AG	84C618357P1	SEAL, GEARCASE, WHEEL SIDE, GE 752 AF-AG-AH
41C637187P1	SEAL, GEARCASE, MOTOR SIDE GE 761	84D702422P1	PAD, WEAR, AMTRAK
41C637208P1	SEAL, GEARCASE, MOTOR SIDE, GE 761RB	84D702422P2	PAD, WEAR, AMTRAK
41C637208P2	SEAL, GEARCASE, MOTOR SIDE, GE 761	84D702422P3	PAD, WEAR, AMTRAK
41C637209P1	SEAL, GEARCASE, WHEEL SIDE, GE 761RB	84D702422P4	PAD, WEAR, AMTRAK
41C637209P2	SEAL, GEARCASE, WHEEL SIDE, GE 761	8819297P1	SPRING, COMPRESSION
41C637642P1	SEAL, GEARCASE, WHEEL SIDE, GEB-13-A(AC)	8864352G4	WICK ASSEMBLY, GE 731-752
41C637642P2	SEAL, GEARCASE, MOTOR SIDE, GEB-13-A(AC)	9949128G1	CARRIER, GE 761
481A202G1	WICK ASSY GE 761	734446	VENT PROTECTOR, CONTROL VALVE
481A202G2	WICK ASSY WITH HARDWARE GE 761	739034	HANDLE, INDEPENDENT BRAKE
493A445G1	WICK ASSEMBLY WITH HARDWARE, GE764	739069	HANDLE, AUTOMATIC BRAKE VALVE

GEAR CASE SEAL KIT continued



OEM Part #	DESCRIPTION
739865	HANDLE, INDEPENDENT BRAKE, OFFSET
741243	HANDLE, AUTOMATIC BRAKE VALVE
748680	VENT PROTECTOR, LOCOMOTIVE VENT VALVE
748708	VENT PROTECTOR, CAR VENT VALVE, WITH SIDE PLUG
502574	VENT PROTECTOR, CONTROL VALVE
532538	HANDLE, AUTOMATIC BRAKE VALVE
557928	HANDLE, INDEPENDENT BRAKE
558494	HANDLE, AUTOMATIC BRAKE VALVE
558494	HANDLE, AUTOMATIC BRAKE VALVE, RED
558494	HANDLE, AUTOMATIC BRAKE VALVE, SLOTTED
566738	VENT PROTECTOR, LOCOMOTIVE VENT VALVE
570622	VENT PROTECTOR, CAR VENT VALVE, WITH SIDE PLUG
572888	HANDLE, INDEPENDENT BRAKE, OFFSET

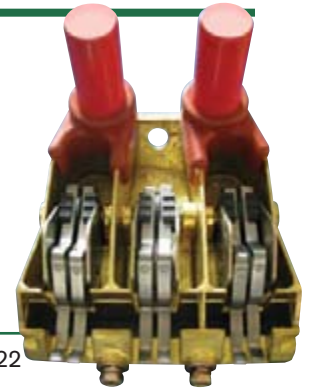
TRACTION MOTOR KIT



OEM Part #	DESCRIPTION
8407505	CLAMP, MS GEARCASE SEAL AND DUST GUARD
8407506	DUST GUARD, COMM. END
9318435	LUBRICATOR ASSEMBLY, D29 & D31
9323317	SEAL RING, OIL, 8" AXLE
9333024	OIL FILLER CAP, 3/4", YELLOW + D114
9560005	SEAL, WS, D29
9560006	SEAL, MS, D29
8435108	SUPPORT BEARING, STD.

8318577	SUPPORT BEARING, STD.
9534909	SUPPORT BEARING, STD. (NEW NARROW WINDOW)
8435109	SUPPORT BEARING, 1/32" US
8318578	SUPPORT BEARING, 1/32" US
9534910	SUPPORT BEARING, 1/32" US (NEW NARROW WINDOW)
435110	SUPPORT BEARING, 1/16" US
8318579	SUPPORT BEARING, 1/16" US
9534911	SUPPORT BEARING, 1/16" US (NEW NARROW WINDOW)
8435111	SUPPORT BEARING, 1/32" OS FLANGE
8318580	SUPPORT BEARING, 1/32" OS FLANGE

BRUSH HOLDERS



OEM Part #	DESCRIPTION
8084210	GENERATOR D12/D22
8124419	GENERATOR D15/D25
8331071	GENERATOR D32
8413188	ALTERNATOR D14
8413189	ALTERNATOR AR-10F
8290124	TRACTION MOTOR D29/D31
8417729	TRACTION MOTOR D77
9550251	TRACTION MOTOR D87B
41B530658G1	AUXILIARY GENERATOR
6733792G1	GENERATOR GT-581
334B746G1	GENERATOR GT-558
41B531649G2	ALTERNATOR
6734766G1	TRACTION MOTOR GE-747
41B530661	TRACTION MOTOR GE-763
41C633996G2	TRACTION MOTOR REACTION
41C637788G1	TRACTION MOTOR REACTION
8843525G1	TRACTION MOTOR RADIAL
41C632667G1	TRACTION MOTOR RADIAL
41C632667G6	TRACTION MOTOR RADIAL
41C632667G12	TRACTION MOTOR RADIAL
41C633771G3	TRACTION MOTOR REACTION
41C632955	TRACTION MOTOR GE-772

BLOWER AND WATERPUMP



OEM Part #	DESCRIPTION
0004234	WATER PUMP (NEW / REBUILT)
40004235	WATER PUMP (NEW / REBUILT)
40004236	WATER PUMP (NEW / REBUILT)
40004237	WATER PUMP (NEW / REBUILT)
8189438	HOUSING (REBUILT)
8369676	BLOWER (REBUILT)
8369677	BLOWER (REBUILT)

BEARINGS



OEM Part #	DESCRIPTION
274185	CLASS F (6 1/2 X 12) CAP SCREW
7455709	TRACTION MOTOR BEARING
907931	6310 BALL BEARING DOUBLE SEAL
908486	6312 BALL BEARING DOUBLE SHEILD
954298	6203 SHIELDED BEARING
954804	6212 BALL BEARING DOUBLE SEAL
2912908	5 1/2 X 10 J/B COMB.(NO ROLLER/CAGE) 13 3/8" WIDE
6912563	5 1/2 X 10 J/B WATERGUARD
6912799	5 1/2 X 10 J/B INNER RACE
6912905	5 1/2 X 10 J/B PLAIN (NO ROLLER/CAGE)
6913026	5 1/2 X 10 J/B REAR COVER
6913027	5 1/2 X 10 J/B RETAINMENT RING
6913028	5 1/2 X 10 J/B RESLIIENT THRUST UNIT
6913029	5 1/2 X 10 J/B THRUST BLOCK

6913031	5 1/2 X 10 J/B COMB. FRONT COVER
6913033	5 1/2 X 10 J/B DRIVING FACE LINER
6913034	5 1/2 X 10 J/B OUTER RACE
6913035	5 1/2 X 10 J/B ROLLER
6913036	5 1/2 X 10 J/B CAGE
6913037	5 1/2 X 10 J/B CENTER RING
6913038	5 1/2 X 10 J/B GASKET
6913047	5 1/2 X 10 J/B SHIM
7440632	5 1/2 X 10 J/B REAR COVER
7450248	TRACTION MOTOR BEARING
7450249	TRACTION MOTOR BEARING
7450252	TRACTION MOTOR BEARING
7450394	TRACTION MOTOR BEARING(REF.SUP.BY CUST.)
7450812	TRACTION MOTOR BEARING(REF.SUP.BY CUST.)
7451270	CLASS F (6 1/2 X 12) SPACER (EX PN, REQ'S CUST.WIDTH SPECS)
7451291	5 1/2 X 10 J/B CENTER RING
7451292	5 1/2 X 10 J/B INNER RACE
7451293	5 1/2 X 10 J/B OUTER RACE
7451294	6 X 11 J/B INNER RACE
7451295	6 X 11 J/B OUTER RACE
7451298	6 X 11 J/B ROLLER (2000 PC MIN)
7451307	6 1/2 X 12 J/B INNER RACE 6.500" AXLE
7451308	6 1/2 X 12 J/B OUTER RACE
7451608	6 1/2 X 12 J/B INNER RACE 6.785" AXLE
7451608	6 1/2 X 12 J/B INNER RACE 6.785" AXLE
7451863	TRACTION MOTOR BEARING
7451874	TRACTION MOTOR BEARING
7451944	5 1/2 X 10 J/B CAGE
7451945	5 1/2 X 10 J/B ROLLER
7451958	6 1/2 X 12 J/B INNER RACE 6.875" AXLE(100 PC MIN)
7451958	6 1/2 X 12 J/B INNER RACE 6.875" AXLE(100 PC MIN)
7451996	TRACTION MOTOR BEARING
7455694	TRACTION MOTOR BEARING
7455748	TRACTION MOTOR BEARING

BEARINGS

continued



DEM Part #	DESCRIPTION		
7455754	TRACTION MOTOR BEARING	7496691	CLASS F (6 1/2 X 12) SEAL WEAR RING
7476020	5 1/2 X 10 J/B PLAIN (NO ROLLER/CAGE)	7497510	CLASS F (6 1/2 X 12) SEAL (SIZE REQUIRED)
7476021	5 1/2 X 10 J/B COMB. (NO ROLLER/CAGE)	7498210	5 1/2 X 10 J/B SHIM
7482827	6 1/2 X 12 J/B FRONT COVER WITH TRUING PLUG	7498819	5 1/2 X 10 J/B THRUST BLOCK
7483115	CLASS F (6 1/2 X 12) BACKING RING	8035786	6 1/2 X 12 J/B OUTER RACE
7490632	5 1/2 X 10 J/B REAR COVER	8035787	"6 1/2 X 12 J/B INNER RACE 6.500" AXLE
7490779	6 1/2 X 12 J/B REAR COVER	8035787	"6 1/2 X 12 J/B INNER RACE 6.500" AXLE
7490799	6 1/2 X 12 J/B REAR COVER	8035789	6 1/2 X 12 J/B CAGE
7491077	5 1/2 X 10 J/B PLAIN FRONT COVER	8035790	6 1/2 X 12 J/B CENTER RING
7491080	5 1/2 X 10 J/B COMB. FRONT COVER	8041902	6 1/2 X 12 J/B SPEED RECORDER DRIVE ADAPTER
7491289	6 1/2 X 12 COMB. FRONT COVER	8041904	6 1/2 X 12 SMALL ROUND STEEL COVER
7491656	SHROUDED END CAP, TAP. JOURNAL BEARING, 6" X 11"	8062800	6 1/2 X 12 J/B ROLLER
7491660	CLASS F (6 1/2 X 12) END CAP	8062800	6 1/2 X 12 J/B ROLLER
7491829	PIPE PLUG WIRING CLIP	8100851	TRACTION MOTOR BEARING
7492208	5 1/2 X 10 J/B GASKET	8102013	6 1/2 X 12 J/B REAR COVER
7492453	5 1/2 X 10 J/B WATERGUARD	8102014	6 1/2 X 12 J/B REAR COVER GASKET
7492522	CLASS F (6 1/2 X 12) BACKING RING	8102030	6 1/2 X 12 J/B STEEL SHIM
7493631	6 1/2 X 12 J/B DRIVING FACE LINER	8102042	6 1/2 X 12 J/B PIPE PLUG
7493646	5 1/2 X 10 J/B DRIVING FACE LINER	8102853	6 1/2 X 12 J/B DRIVING FACE LINER
7493667	5 1/2 X 10 J/B LUG LINER	8133335	STANDARD LOCK WASHER
7493724	6 1/2 X 12 J/B STRIP LINER	8134481	6 1/2 X 12 J/B RESILIENT THRUST UNIT
7493726	5 1/2 X 10 J/B STRIP LINER	8148707	6 1/2 X 12 J/B MAE WEST COMB. FRONT COVER
7493813	STRIP LINER MANGANESE STEEL	8148708	6 1/2 X 12 J/B STEEL SHIM
7494211	5 1/2 X 10 J/B RESILIENT THRUST UNIT	8148709	6 1/2 X 12 J/B PLAIN FRONT COVER
7494227	6 X 11 J/B RESILIENT THRUST UNIT	8148710	6 1/2 X 12 J/B RESILIENT THRUST UNIT
7496436	6 X 11 RETAINMENT RING	8172326	6 X 11 J/B RESILIENT THRUST UNIT
7496440	5 1/2 X 10 J/B RETAINMENT RING (50 PC MIN)	8172333	5 1/2 X 10 J/B COVER PLATE
7496449	6 1/2 X 12 J/B RETAINMENT RING	8172334	5 1/2 X 10 J/B RUBBER GASKET
7496641	CLASS F (6 1/2 X 12) SEAL WEAR RING	8172337	5 1/2 X 10 J/B STRIP LINER
		8175381	5 1/2 X 10 J/B LUG LINER
		8200820	TRACTION MOTOR BEARING
		8204226	6 1/2 X 12 J/B RETAINMENT RING
		8230114	6 1/2 X 12 INNER RACE 6.600" AXLE
		8230114	6 1/2 X 12 INNER RACE 6.600" AXLE
		8264031	5 1/2 X 10 J/B PLAIN FRONT COVER
		8372102	CLASS F (6 1/2 X 12) LOCKING PLATE
		8397175	CLASS F (6 1/2 X 12) SPACER

8397176	CLASS F (6 1/2 X 12) SEAL (SIZE REQUIRED)
8397177	CLASS F (6 1/2 X 12) END CAP
8397178	CLASS F (6 1/2 X 12) CAP SCREW
8397183	CLASS F SEAL RING 6 1/2 X 12
8397184	CLASS F (6 1/2 X 12) BACKING RING
8442372	CLASS F (6 1/2 X 12) END CAP
8864951	TRACTION MOTOR BEARING
9087625	6 1/2 X 12 J/B THRUST BLOCK - SOLID BRONZE
9417516	TRACTION MOTOR BEARING
9417519	TRACTION MOTOR BEARING
9417522	TRACTION MOTOR BEARING
9431538	TRACTION MOTOR BEARING
9436909	TRACTION MOTOR BEARING
9437083	TRACTION MOTOR BEARING
9437296	TRACTION MOTOR BEARING
9439610	TRACTION MOTOR BEARING
9440141	TRACTION MOTOR BEARING
9440203	TRACTION MOTOR BEARING
9440204	TRACTION MOTOR BEARING
9440292	6310 BALL BEARING DOUBLE SEAL
40000530	6 1/2 X 12 COMB. FRONT COVER
40040575	TRACTION MOTOR BEARING
40040576	TRACTION MOTOR BEARING
41A216556P10	5 1/2 X 10 J/B CAGE
41A216556P13	6 1/2 X 12 J/B REAR COVER GASKET
41A216556P5	6 1/2 X 12 J/B OUTER RACE
41A216556P6	6 1/2 X 12 J/B INNER RACE 6.500" AXLE
41A216556P6	6 1/2 X 12 J/B CENTER RING
41A216556P8	5 1/2 X 10 J/B ROLLER
8864951P117	TRACTION MOTOR BEARING
8864951P119	TRACTION MOTOR BEARING
8864951P130	TRACTION MOTOR BEARING
8864951P144	TRACTION MOTOR BEARING
8864951P148	TRACTION MOTOR BEARING
8864951P160	TRACTION MOTOR BEARING
8864951P164	TRACTION MOTOR BEARING
8864951P166	TRACTION MOTOR BEARING
8864951P167	TRACTION MOTOR BEARING

RADIATORS, OIL COOLERS AND AFTER- COOLERS



OEM Part #	DESCRIPTION
9504784	RADIATOR TRIPLE
9583760	RADIATOR TRIPLE
3010256	RADIATOR DOUBLE
3027016	RADIATOR DOUBLE
8356205	RADIATOR DOUBLE
8462344	RADIATOR DOUBLE
8366731	RADIATOR DOUBLE
9315655	RADIATOR DOUBLE
8389388	RADIATOR DOUBLE
9583761	RADIATOR DOUBLE
3129131	RADIATOR SINGLE
8206685	RADIATOR SINGLE
8490482	RADIATOR SINGLE
9526642	RADIATOR SINGLE
3039087	OIL COOLER
3146250	OIL COOLER
8318804	OIL COOLER
8393169	OIL COOLER
8415733	OIL COOLER
9514842	OIL COOLER
3136028	OIL COOLER
8228373	OIL COOLER
8415734	OIL COOLER
9339040	OIL COOLER
8352305	AFTERCOOLER
8409891	AFTERCOOLER
8534519	AFTERCOOLER
8534979	AFTERCOOLER

RADIATORS, OIL COOLERS AND AFTER- COOLERS

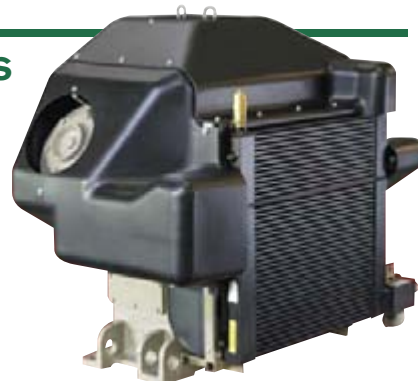
continued



OEM Part #	DESCRIPTION
9541961	AFTERCOOLER
9318129	BOTTOM COVER
8271246	BOTTOM COVER
8491413	BOTTOM COVER
8271227	TOP COVER
9523384	TOP COVER
9326695	TANK
8272137	TANK
8422328	TANK
8494403	TANK
9523366	TANK
9558514	TANK
8423586	VALVE ASSEMBLY
8250671	VALVE ASSEMBLY
8272145	DISCHARGE BAFFLE
8412061	OIL COOLER AND TANK ASSEMBLY
8364235	OIL COOLER AND TANK ASSEMBLY
8422327	OIL COOLER AND TANK ASSEMBLY
8466728	OIL COOLER AND TANK ASSEMBLY
8432493	OIL COOLER AND TANK ASSEMBLY
8494450	OIL COOLER AND TANK ASSEMBLY
9523367	OIL COOLER AND TANK ASSEMBLY
9558515	OIL COOLER AND TANK ASSEMBLY
3129239	RADIATOR
8127126	RADIATOR
8501534	RADIATOR
8365645	AFTERCOOLER
40020885	AFTERCOOLER
40046710	AFTERCOOLER
8288974	AFTERCOOLER

3125724	OIL COOLER
8137408	OIL COOLER
3129515	OIL COOLER
8183063	OIL COOLER
8518711	OIL COOLER

COMPRESSORS



WLX, WLU, WLA, WLN WLT, WLG, WLP, WLO,
WLR and WLS

And all replacement spare parts and components.

BLOC TRACTION MOTORS (NEW AND REBUILT)



EMD models D29, D31, D43, D77, D78, D87, D90
GE models 752, 761, 763

And all replacement spare parts and components.

NOTES

INDEX

DESCRIPTION	PAGE
CAPS	02
SPARE PARTS	02
ENGINE PARTS	03
HEAD LIGHT & JUMPERS & RECEPTACLES	03
ADDITIONAL MECHANICAL	04
AIR PRODUCTS	04
CAB COOLING & HEATING	05
AUXILARY GENERATORS	05
DYNAMIC BRAKING	06
FANS	06
MOTORS	06
BLOCK, PIN, SHAFT	07
MOTOR SUPPORT BEARINGS	10
DIODES AND RECTIFIERS	12
FRICION SNUBBERS	13
BLOC GEARS AND PINIONS	13
MODULES AND CARDS (NEW AND REBUILT)	14
GEAR CASE SEAL KIT	17
TRACTION MOTOR KIT	22
BRUSH HOLDERS	22
BLOWER AND WATERPUMP	23
BEARINGS	23
RADIATORS, OIL COOLERS AND AFTER-COOLERS	25
COMPRESSORS	26
BLOC TRACTION MOTORS (NEW AND REBUILT)	26



Diesel Loko Distribution Sp. z o.o.
ul. Borowiec 50, Zaborze 32-600 Oświęcim

